

## *What's New in West Chester!*



### **GE Expands Additive Technology Operations in West Chester**

GE Aviation, a world-wide leading provider of jet engines, components, and integrated systems for commercial and military aircraft, has found West Chester Township an attractive place to innovate and do business and continues to invest in the community.

In 2008, GE Aviation, in conjunction with Duke Realty, began construction on a four-building Class A office complex totaling more than 800,000 square feet. The development, known as North Pointe at Union Centre, is home to approximately 1,400 GE Aviation and CFM Aerospace employees.

In 2014, GE Aviation Additive Technology consolidated multiple sites throughout the region and created a new state-of-the-art 150,000 square-foot research and development center at 9701 Windisch Road in West Chester Township.

At this center, GE Aviation Additive Technology conducts cutting-edge research into advanced manufacturing 3D technologies. The research and development center was an \$11 million project and brought approximately 130 new manufacturing jobs to West Chester.

In September 2019, GE Additive, a division of GE Aviation, which pioneers additive technology, sometimes known as 3D Printing,, leased a 171,537 square-foot facility at 8556 Trade Center Drive in the West Chester Trade Center off Union Centre Boulevard.

The new location - with room for up to 200 GE Additive team members - will bring together teams currently located in three locations in the area under one roof.. Technology and engineering teams, GE

Additive AddWorks consultants, as well as commercial operations and functional teams, will all be based at the dynamic site.

Founded in late 2016, GE Additive is a world leader in additive technology, additive manufacturing and design consultancy. In addition to deep experience in the aerospace and defense sector, the company is also supporting customers from most industries, such as the automotive and the medical devices sectors, on their additive journeys.

GE Additive also recently signed a five-year cooperative research and development agreement (CRADA) partnership agreement with the U.S. Department of Energy's Oak Ridge National Laboratory, a leader in additive manufacturing.

The two partners will improve energy and material efficiency, utilize domestic energy resources, support production of clean energy and benefit the nation's economy.

The agreement focuses on processes, materials and software to drive broader adoption of additive manufacturing technology.

GE Aviation's Additive Technology Center on Windisch Road will also remain open for business.

West Chester Township is honored to have been chosen as home to two such progressive operations as these.

For more information on GE Additive, visit <https://www.ge.com/additive/>.



## Room for More in Lakota's Portfolio of 300-Plus Business Partners

When your end goal is to graduate students ready for one of the 4Es - Enrollment, Employment, Enlistment or Entrepreneurship - it only makes sense that you lean on the thriving business community surrounding our schools.

Lakota Local Schools did just that when it came time to design its quintessential "[Portrait of a Graduate](#)." Knowing that student success is defined by far more than a transcript and standardized test scores, the Portrait literally defines the skills, characteristics and attributes the district wants to develop in every Lakota graduate. Local business owners were just one of the groups the district invited to the table for that important discussion and after months of deliberation, they had their "north star" to help guide all future instructional and programming decisions.

But Lakota's partnership with the local business community is far more active than a sounding board for curriculum decisions. In the last two years, the district has activated nearly 300 local businesses to play an active role in preparing students for life after graduation. Those connections range in scope from expert classroom visitors and program sponsors to mentors, panelists and internship hosts.

Lakota's new [Cyber Academy](#), which offers students a head start in one of the fastest growing professions in the world, was the direct result of multiple professionals coming together around a single cause. In its first year, more than 150 East and West high-schoolers have the opportunity to earn up to six industry certifications in cyber security, a field expected to have about 3.5 million unfilled jobs by 2021.

Lakota's newest venture is in partnership with a steering committee made up of mostly local business leaders. The group has reimagined Lakota's pathway for future business owners and entrepreneurs, capping it off with a nationally recognized program called INCubatoredu@Lakota. Basically "Shark Tank" for high-schoolers, students will work alongside professional mentors to ideate and develop their own product or service. In the end, they will compete against their classmates, pitching their ideas to investors who will award seed money to help make the top ideas a reality.

"Building the skills that we want to see in our graduates starts as early as kindergarten," said Lakota Superintendent Matthew Miller. "With 16,700 students looking to us for guidance on their post-graduate plans, we need all of our local business leaders on board to help us make those connections."

[Learn more about how to join Lakota's growing portfolio of business partners.](#)



## Infrastructure Investment Sets West Chester Apart

A strong commitment to infrastructure investment and ease of access has set West Chester apart as a dynamic center for economic development.

While construction crews are wrapping up their season for winter, West Chester is poised to move into the new decade with dynamic improvements that will keep traffic moving and welcome new corporate investment.

West Chester wrapped up one significant roadway project in 2019, started one and is planning another for 2020.

The Cincinnati-Dayton Road transformation was completed this year with a few finishing touches – decorative street lighting and a pocket park – yet to come. The two-year project resulted in a safer ride for motorists and better pedestrian access through the corridor with the addition of sidewalks on both sides of the street and pedestrian crossings.

Despite impacts to traffic during the construction, West Chester continued to see new investment in the Olde West Chester corridor.

The Union Centre Boulevard diverging diamond interchange (DDI) project will transform West Chester’s most visible corporate area. The \$20 million project, funded with TIF dollars, began in 2019 and will continue into the 2020 season – after a winter break – with completion expected by fall.

The transformation of the interchange will take place on the existing bridge deck and will include extension of the highway ramps. Nearly all of the work – over the next two construction seasons – will take place without complete closure of the bridge or road. A four-day closure of the bridge will be necessary at some point and will be planned for a weekend.

Since 1997 (construction of UCB interchange) there has been more than \$2.4 billion in real and personal property investments; more than 22 million square feet of retail, corporate office, entertainment and industrial development, generating more than 25,000 jobs in the Union Centre area.

More than 50,000 cars per day travel the Union Centre change currently. Investment in the DDI supports opportunities to achieve the highest and best use of remaining developable properties in the area, efficiently and safely move vehicles and even allow for some pedestrian use.

In addition to the redesign of the bridge and ramps, West Chester will consider landscape and other design features intended to set the community apart as one of America’s best places to live.

Also on the books for 2020 are improvements to Tylersville Road. An additional westbound lane will be constructed from Cox Road to I-75. There will also be a left turn lane on Tylersville Road at Chantilly.

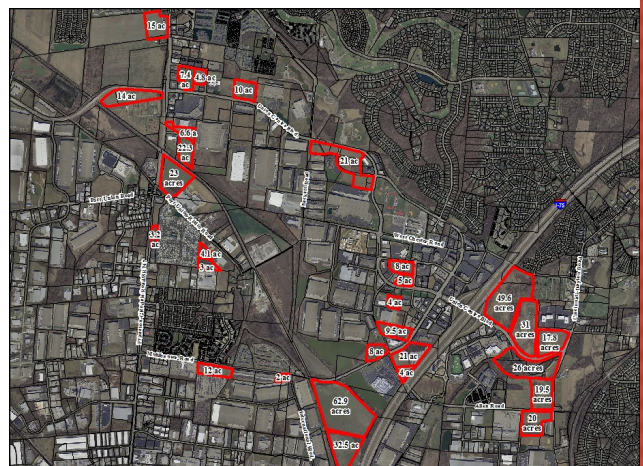
While making these improvements, the overpass bridge on Tylersville will be getting additional updates including some Township gateway elements and a decorative vandal fencing.

Investment in quality infrastructure is a key factor in defining West Chester as a premier community for economic development which has allowed West Chester to responsibly grow and become one of America’s Best Places to Live.

## West Chester: Built With You in Mind

West Chester is a proven destination for corporate investment displayed by the expansive growth over the past two decades, yet development opportunities still exist throughout the township with commercial sites of 1 to 60 acres still available. Office, manufacturing, research and properties with accessible infrastructure, frontage on I-75 or within two miles of an interstate interchange are available.

Contact Cathy Walton, Business Attraction and Expansion Manager for personalized assistance at 513-759-7325 or [cwalton@westchesteroh.org](mailto:cwalton@westchesteroh.org).



## INDUSTRIAL PROJECTS



### Fameccanica North America

**Fameccanica North America**, the world benchmark company designing and manufacturing machinery for disposable hygienic products and highly automated liquid filling integrated systems, announced it will relocate and expand its existing West Chester North American headquarters to an 84,843 square-foot facility at 8511 Trade Center Drive in the new West Chester Trade Center at Union Centre Boulevard. Founded in 2009 in West Chester with 2 employees, Fameccanica North America now has 51 employees with plans to add up to 20 more over the next 3 years.



### Magnum Piering

**Magnum Piering**, an industry leader in providing high quality, competitively priced foundation systems and services, announced it will expand its existing West Chester helical pier manufacturing plant and corporate headquarters by a total of 35,106 square-feet at 156 Circle Freeway off Crescentville Road. Founded in 1981, Magnum Piering manufactures high capacity, high quality steel piling products for deep foundations and foundation repair applications for residential, commercial and industrial customers.



### SugarCreek

**SugarCreek**, offering comprehensive food processing and innovative packing solutions, announced a 15,000 square-foot expansion to its existing manufacturing facility at 4235 Thunderbird Lane in West Chester Township. SugarCreek plans to add 120 new jobs and invest \$36 million in capital improvements which will include the addition of two new product lines, the office addition and significant modifications to its existing production capabilities. For more than 52 years, Sugar Creek has offered its authentic culinary expertise to several of the largest and best-known brands in the world.



### Gexpro

**Gexpro** is part of the Rexel family of businesses which together form one of the world's largest electrical distributors. Gexpro and its sister businesses have over 500 branches in the United States and just announced it will relocate to a 27,042 square-foot distribution facility with a storefront counter area at 8586 Trade Center Drive in the new West Chester Trade Center development. Gexpro combines productivity tools, large local inventories and dedicated products and solutions specialists to

provide customers the electrical supplies they need, when and where they need them. Gexpro supports customers around the world to create value, lower their total cost of ownership and run their businesses better.

### Taylor Logistics

**Taylor Logistics**, a national third-party logistics provider, announced it will expand its existing West Chester corporate headquarters leasing a second 78,378 square-foot location at 10095 International Boulevard off Muhlhauser Road. Starting in 1850 with a horse and wagon, Taylor Logistics is now the oldest third-party logistics intermodal service provider in the nation specializing in three central offerings of food-grade warehousing, freight brokerage and intermodal drayage.



### Dodson Global

**Dodson Global**, distributors with a nearly 40 year history of providing carbon steel products to the American market, announced it will relocate to an 114,000 square-foot facility at 4520 LeSaint Court in West Chester. Dodson Global operates as a master distributor, supplier and wholesaler of carbon steel weld fittings, flanges, forged steel fittings and valves.



### 1Source Fitness

**1Source Fitness**, specializing in commercial fitness equipment sales, service and installation, opened a 21,795 square-foot facility at 9354 Sutton Place off Princeton Glendale Road/SR747. 1Source Fitness services fitness industries, hotels, municipalities, colleges and more in the Ohio, Southern Michigan, Eastern Indiana and Northern Kentucky markets.



### Hospice Source

**Hospice Source**, providing compassionate care through the provision of high quality medical equipment, leased a 3,000 square-foot facility at 9852 Crescent Park Drive in Schumacher Commerce Park. Hospice Source medical equipment is delivered by highly trained professionals to hospice caregivers.

### Vision Tech

**Vision Tech**, providing residential and commercial property owners with impactful exterior solutions, leased



a 1,500 square-foot facility at 9011 Innovation Drive off Port Union Road. Vision Tech is committed to delivering quality materials and craftsmanship for new construction, upgrades and storm restoration projects.

## OFFICE/MEDICAL PROJECTS



### Dermatology & Skin Care Associates

**Dermatology & Skin Care Associates**, a clinic combining skincare science and rejuvenative techniques to maintain skin health and beauty, announced it will construct a new 17,543 square-foot medical office building at 7249 Liberty Way in West Chester Township. The mission at Dermatology & Skin Care Associates is to utilize the latest research and foremost procedures in combination with cutting-edge technology to offer the most comprehensive medical and cosmetic dermatologic care by board-certified dermatologists. The new building will have additional space for lease upon completion.



### Wieland Builders

**Wieland Builders**, third generation, family-owned custom home builders, announced it will relocate its corporate headquarters to a new 7,257 square-foot office building it will construction at 7906 Tylersville Square Drive off Tylersville Road. The Wieland family has been building homes in Southwest Ohio and Northern Kentucky for more than 65 years. Wieland Builders specializes in custom built homes that fit your budget and lifestyle, but their relentless focus is on quality and customer service. Wieland Builders is excited to announce it will be joining the HOMEARAMA 2020 at Walworth Junction, which will mark its 23<sup>rd</sup> year participating in HOMEARAMA. The new office building will have three additional spaces for lease upon completion.



### McCaslin Imbus & McCaslin

**McCaslin Imbus & McCaslin**, professional law offices, announced it will relocate and expand its existing Butler County location to a 2,633 square-foot office at 7200 Tylersville Road near Wetherington Drive. The attorneys at McCaslin Imbus & McCaslin have developed special expertise in matters involving mass torts, product liability, medical malpractice, insurance coverage, civil rights, employment law, workers' compensation and environmental claims. Members of the firm serve clients throughout Ohio, Kentucky and Southeast Indiana.



## Electronic Merchant Systems

**Electronic Merchant Systems (EMS)**, providing payment processing and merchant services from coast-to-coast, announced it will open a 2,127 square-foot Class A office at 9277 Centre Pointe Drive in the Centre Pointe Office Park. EMS services thousands of retail, internet and start-up businesses with an innovative suite of business solutions and additional high quality services.



## Catalyst Counseling

**Catalyst Counseling**, a holistic and strength-based mental health counseling service, opened its 2,795 square-foot office at 8809 Cincinnati Dayton Road in Olde West Chester. Catalyst Counseling specializes in quality mental health care that is easily affordable and accessible. Catalyst Counseling offers a diverse team of highly trained and compassionate therapists who work to empower clients of all ages to become the best version of themselves.



## Meadows Law Firm

**Meadows Law Firm**, specializing in criminal defense, OVI/DUI defense, and family law with more than 45 years of combined experience and knowledge, relocated its existing West Chester law firm to a 2,267 square-foot office at 8750 Union Centre Boulevard. The attorneys at Meadows Law Firm are dedicated to giving their clients the personal touch and attention they need, as they continue to stay educated on current practices and law-enforcement techniques to ensure their clients get the best defense possible.



## Murtland Chiropractic

**Murtland Chiropractic**, Dr. Nicholas Murtland a board-certified chiropractor physician successfully treating patients for years using a variety of chiropractic techniques including massage, dry needling and other therapy treatment protocols, opened a 1,344 square-foot medical office at 7846 Cox Road in West Chester Plaza. Dr. Murtland provides a gentle and effective approach to many different muscular, neurological and joint-related conditions for people of all ages. Murtland Chiropractic accepts most major insurance carriers and offers affordable cash rates.



## WD Wright Contracting

**WD Wright Contracting**, an industry leader in general contracting, excavation, certified flagging-traffic control, fiber optics, telecommunications and wireless construction, snow removal and project management, announced it will open a second 2,068 square-foot Cincinnati office at 9536 Cincinnati Columbus Road/SR

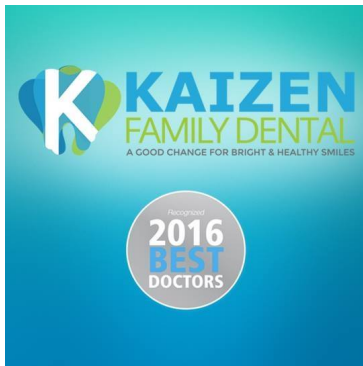


42. Founded in 1977, WD Wright Contracting services customers ranging from municipalities, utilities, private and commercial industries and Fortune 100 telecommunications companies.



### Embry Insurance Agency

**Embry Insurance Agency**, your local Farmers Insurance agents, opened a 1,200 square-foot office at 4972 Union Centre Pavilion Drive off Union Centre Boulevard at Princeton Glendale Road/SR 747. Embry Insurance Agency has the knowledge and experience to help its customers better understand auto, home, renters and business insurance coverage options.



### Kaizen Family Dental

**Kaizen Family Dental**, a hometown dental practice specializing in comprehensive dentistry for the entire family, announced it will relocate its existing practice to a 2,618 square-foot medical office at 7665 Monarch Drive off Kingsgate Way. Kaizen Family Dental places a premium on excellent service, quality care and patient convenience.



### Envoy Mortgage

**Envoy Mortgage**, a full service residential mortgage lender, opened a 1,477 square-foot office at 7681 Tylers Place Boulevard. Envoy Mortgage offers a full menu of loan products while providing expertise in all areas of the residential mortgage lending industry. Envoy Mortgage invests in the newest technology to improve efficiencies, create relationships and make an impact in local communities.

## COMMERCIAL PROJECTS



### Kinder Garden School

**Kinder Garden School**, a private educational academy utilizing Montessori methods of teaching, announced a 2,033 square-foot expansion to its existing facility at 8374 Princeton Glendale Road/SR747. The Kinder Garden School is devoted to growing a child's wish to flourish and learn by cultivating curiosity and problem-solving proficiency in a fully supportive, fertile, fun environment.

### Deluxe Nail Salon and Spa



**Deluxe Nail Salon and Spa**, a full service nail salon and spa, announced it will open an 8,600 square-foot salon at 9228 Centre Pointe Drive in the former Asiatique building. Deluxe Nail Salon and Spa features natural organic services and result-driven treatments in a luxurious environment. Deluxe Nail and Spa offers premium and deluxe manicure, pedicure, massage, facial services and more all tailored to its customer's specific needs.



ANOTHER  
*Broken Egg Cafe*

### Another Broken Egg Café

**Another Broken Egg Café**, specializing in Southern-inspired breakfast, brunch and lunch dishes with an artisanal flair, announced it will open a 3,951 square-foot restaurant at 7701 Voice of America Centre Drive in April. Another Broken Egg Café's passion is to create fresh, creative and delicious dishes that can be paired with refreshing, hand-crafted cocktails by a staff that provides exceptional, hospitable service and a unique experience for every guest, every time.



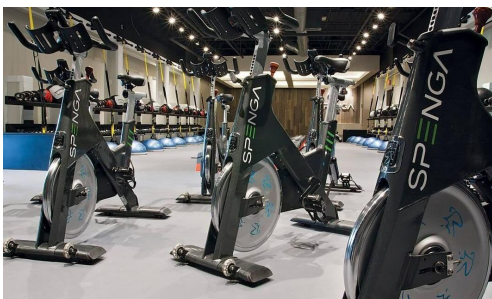
### Currito

**Currito**, specializing in greens, grains and smoothies, announced it will open a 2,665 square-foot restaurant at 7687 Doc Drive near Cox and Tylersville roads. Currito offers burritos, bowls, salads and smoothies made with bold flavors, international inspirations and fresh food sources from local farmers.



### Ambiance Nail Spa

**Ambiance Nail Spa**, a full service nail salon and spa, announced it will open a 5,350 square-foot salon at 7594 Voice of America Centre Drive in the Voice of America Centre at Cox and Tylersville roads. The award-winning Ambiance Nail Salon offers a variety of nail and skin care services in a relaxing, luxurious environment.



### SPENGA

**SPENGA**, a unique fitness studio delivering cardiovascular, strength and flexibility training, announced it will open a 3,904 square-foot facility at 7996 Princeton Glendale Road/SR 747 in the Crossings at Beckett anchored by the new Kroger Marketplace. Each 60 minute SPENGA session boosts endurance, strengthens muscles and restores a body through a combination of spin, HIIT training and yoga.



### Spicy Cuisine

**Spicy Cuisine**, specializing in homemade Indian and Pakistani dishes, announced it will open a 5,043 square-foot restaurant at 4958 Union Centre Pavilion Drive off Union Centre Boulevard.



### Half Price Books

**Half Price Books**, America's largest family-owned bookstore with more than 120 stores across the country, leased a 4,656 square-foot warehouse facility at 4835 Business Center Way off Cox Road for office and storage use. Half Price Books buys and sells new and used books, music, movies, games, electronic devices, collectibles and more.



### Lovey Letters by Leah

**Lovey Letters by Leah**, specializing in uniquely hand-crafted, custom-made individual wood letters and frames, opened a nearly 1,000 square-foot store at 8988 Cincinnati Dayton Road in Olde West Chester. Lovey Letters by Leah's personalized letters are made-to-order and then customized with specialty paper, ribbon, stickers or decals based on the theme and color scheme the customer chooses.

## COMING SOON



Fairfield Inn & Suites



Currito



Another Broken Egg Cafe



Hyatt House



Avid Hotels



Hampton Inn & Suites

## NOW OPEN



[Twin Peaks](#)



[Subway](#)



[United Dairy Farmers](#)



[Cincinnati Curling Club](#)



[Chipotle](#)



[Aloft West Chester](#)

## OUR SUPPORTERS

The West Chester Development Council is a non-profit corporation, representing a public/private partnership between West Chester Township and the private business sector established to promote economic development initiatives. The following organizations have chosen to support the economic development and marketing efforts of West Chester Township and the West Chester Development Council.

[AK Steel](#)

[AstraZeneca](#)

[Bass Pro Outdoor World](#)

[ChappCo](#)

[DRT Aerospace](#)

[First Financial Bank](#)

[GE Aviation](#)

[Griffin Capital](#)

[KEMBA Credit Union](#)

[Main Event Entertainment](#)

[NorthPoint Development](#)

[Park National Bank](#)

[Planes Companies](#)

[Republic Wire](#)

[Schumacher Dugan Construction](#)

[Street Partners](#)

[Systecon](#)

[The Streets of West Chester](#)

[Traditions Building and Development](#)

[US Bank](#)

[West Chester Hospital](#)

[West Chester-Liberty Chamber](#)

[West Chester Township](#)

[Wetherington Golf and Country Club](#)

1Q-2020



West Chester Development Council | 9577 Beckett Road, West Chester, OH 45069

[Unsubscribe {recipient's email}](#).

[Update Profile](#) | [About Constant Contact](#)

Sent by [veldridge@westchesteroh.org](mailto:veldridge@westchesteroh.org) in collaboration with



Try email marketing for free today!